



Create
extraordinary

RIGGING and DESIGN

Full Line Product Catalog • 2016



Our purpose is to purpose-build for you!

Thank you for your interest in VER's RIGGING and DESIGN Service Experience. We have created this feature of our unique product / service mix around our customers. We provide service from the *user point of view* and that is a real departure from what others have done. Our Rigging Team Managers alone clock in at more than 100 combined years of entertainment rigging experience! Plus, while most companies very loosely adhere to Manufacturer and Safety standards, VER makes all safety standards fundamental in the daily injections and evaluations of all of our equipment.

We pride ourselves in being the safest rental company in the Rigging Industry. We are able to combine this experience with an ever-growing inventory to successfully complete our intricate and often complicated client needs. There is truly no company out there that offers the depth and breadth that we are able to routinely provide - day after day, 24 • 7 • 365.

Thanks again for the opportunity to show you a little bit more about what we do!

Respectfully,

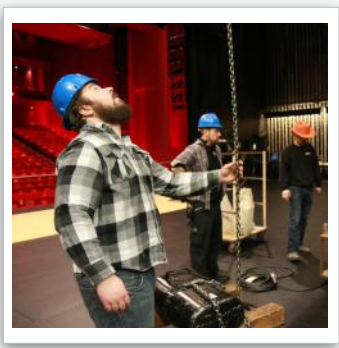
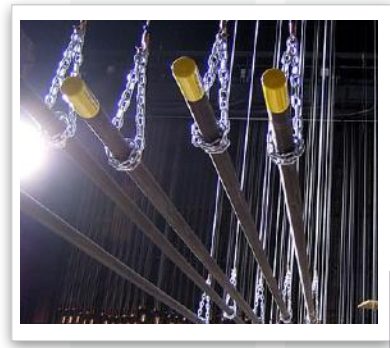
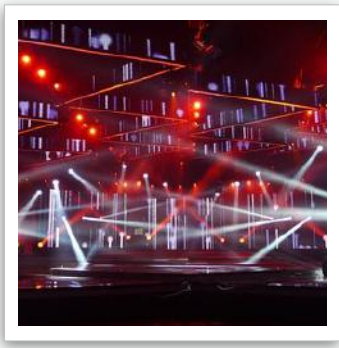
Tony Galuppi

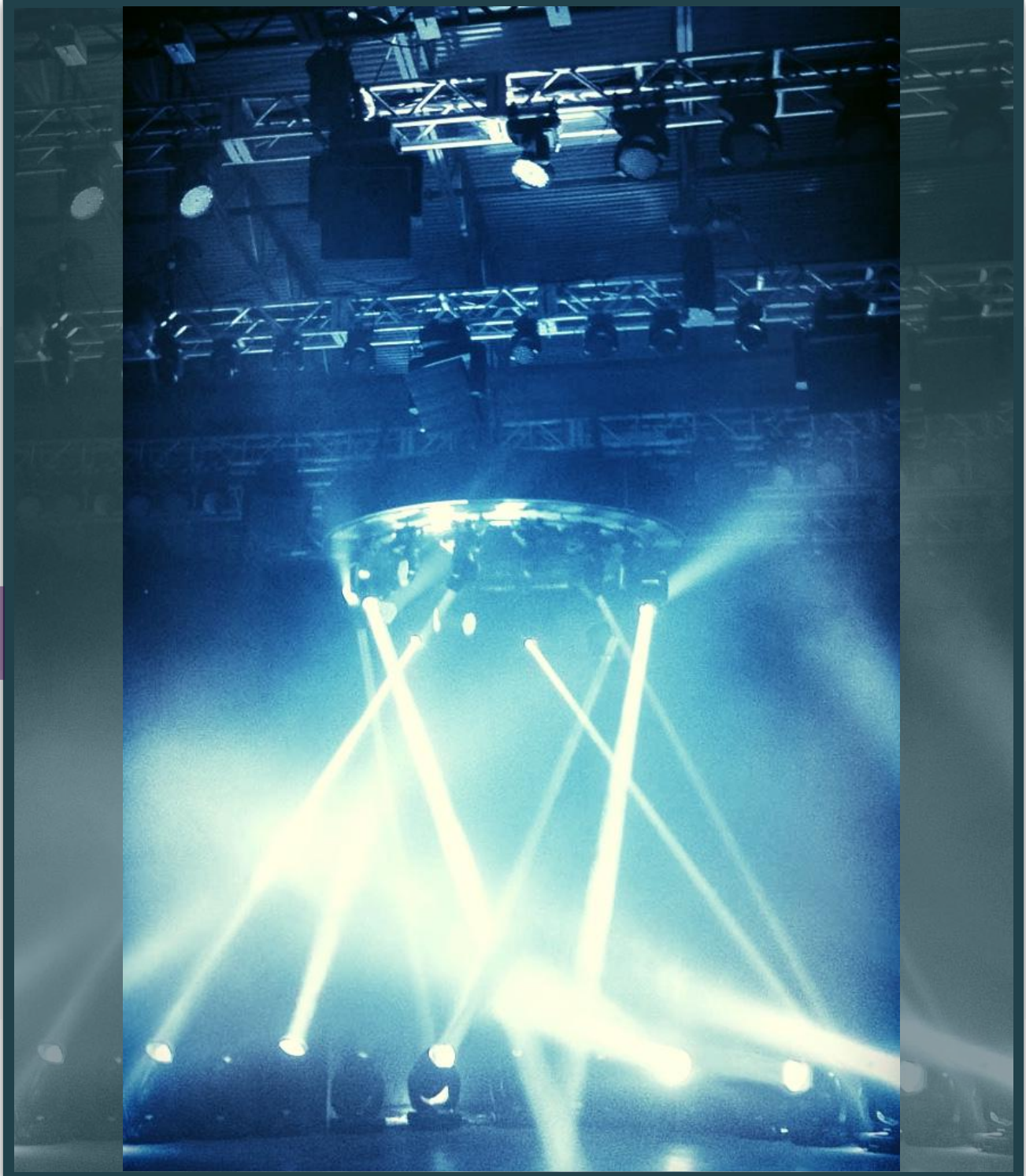
tgaluppi@ver.com

+1 (818) 502-8900 main

+1 (818) 912-7953 mobile

757 West California Street | Building 4 | Glendale | CA | 91203 | USA





Tony Galuppi

Tony is a great guy and he has huge muscles ...

He can hang with the best of them! Lorem ipsum dolor sit amet, consectetur adipiscing elit, sed do eiusmod tempor incididunt ut labore et dolore magna aliqua. Ut enim ad minim veniam, quis nostrud exercitation ullamco laboris nisi ut aliquip ex ea commodo consequat. Duis aute irure dolor in reprehenderit in voluptate velit esse cillum dolore eu fugiat nulla pariatur.

Excepteur sint occaecat cupidatat non proident, sunt in culpa qui officia deserunt mollit anim id est laborum.

Lorem ipsum dolor sit amet, consectetur adipiscing elit, sed do eiusmod tempor incididunt ut labore et dolore magna aliqua. Ut enim ad minim veniam, quis nostrud exercitation ullamco laboris nisi ut aliquip ex ea commodo consequat. Duis aute irure dolor in reprehenderit in voluptate velit esse cillum dolore eu fugiat nulla pariatur. Excepteur sint occaecat cupidatat non proident, sunt in culpa qui officia deserunt.



INDEX

TRUSSING

- **Xtreme Structures and Fabrication (XSF)**

- 12" x 12" bolted
- 12" x 12" spigot diamond truss
- 20.5" x 20.5 bolted medium duty
- 20.5" x 20.5" spigot truss
- 24" x 30" spigot pre-rigged truss
- Specialty
 - Corner Blocks
 - Circles
 - Battons
 - Ladders

- **Tyler GT Truss**

- 14" x 24" GT Tyler truss spigot

- **Truss Accessories**

- | | |
|------------------------|--------------------------|
| Base Plates | Grapples 12" • 20" • 24" |
| Hoist pickup bars | Rig Points |
| Angle specific widgets | Hinge Blocks |
| Custom bracket designs | Articulating Blocks |

CHAIN HOISTS

- **LodeStar**

- 1/2 Ton single reeved - 65' or 75'
- 1 Ton single reeved - 50', 75', or 125'
- 2 Ton double reeved - 75'
- *** 2 Ton single reeved - 75'

- **Prostar**

- 1/4 Ton single reeved - 40' or 60'
- 1/2 Ton double reeved - 40'

- **Automated Chain Hoist**

HOIST CONTROL and POWER SYSTEM

- **Distribution**

- 8-Way conventional and truss mountable
- 12-Way - Specialty Pack - Tour Audio
- 24-Way with or without L21-30 output
- 32-Way with CAM in/OUT

- **Handheld Control**

- 8 / 12 / 24 / 32 channel units
- Single motor pickles

CABLES

- **Power Cable**

CAM - 4AWG - Red, Green, Blue, White and Black L21-30 - 5wire
1 Ton Single Reeved - 50', 75', or
Motor Fly 10'-150' - in 25' increments

- **Pendant**

Motor pendant - 25' increments

- **Data**

6pin XLR
CAT 5e jacketed

LOAD MONITORING

- **Load Cells**

2 ton cell mate load cell
5 ton wireless load cells
10 ton digital load cell - individual units

- **Systems**

Cell mate 16-way monitoring
Cell mate 24-way monitoring
WarDen load monitoring and Control System

POWER DISTRIBUTION

- **Units**

MaxPac - 6 L21-30 output
Rigging power distro



RIGGING HARDWARE

- **Round Slings**

Soft 3' / 4' / 6' and 9' lengths
Gac-Flex 3' / 4' / 6' and 9' lengths

- **Wire Rope Slings**

3/8" - 2' / 5" / 10' / 20' / 30' /and 50' lengths
1/2" - 2' / 5" / 10' / 20' / 30' /and 50' lengths

- **STAC (deck) Chain**

13' and 6' lengths

- **Shackles**

1/4", 5/16", 3/8", 1/2", 5/8", 3/4" and 1" - various finishes

- **Pear Rings**

1/2", 5/8", 3/4" and 1" - various finishes

- **Rope**

Worklines
Haul lines
Climbing ropes
Tie line

- **Wire Rope Ladders**

10' - 25' - 60' lengths

- **Tools**

for various applications

SAFETY GEAR

- **Limpet Safety System**

- **PPE**

Harness
Lanyards
Hard Hats
Safety Notification

- **Horizontal Life Lines**

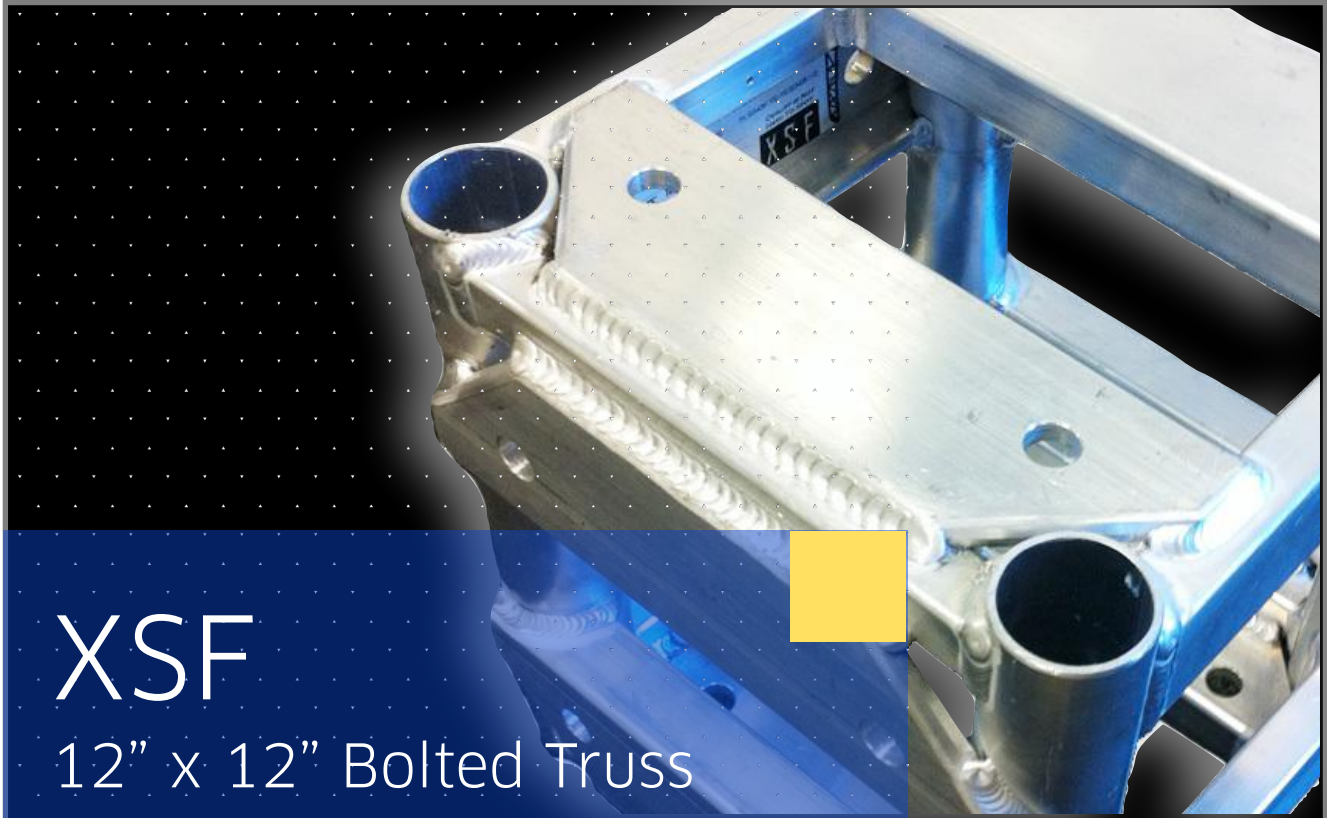
FallTech 50'
DBI Sala 50' and 75' lengths

- **Self Retracting Life Lines**

6', 9', 35', 50', 60' and our **NEW** 85' lengths

TRUSSING





Our high quality truss is available with three connection options: Fork Ended, Plated and Aluminum Fork Ended in a large selection of straight and circular trussing. Our book-end and center-pivot hinges all include heavy duty stainless steel shafts and high quality oil-impregnated bronze bushings.

MAIN CHORDS 2.0" OD x 1/8"

DIAGONALS 1.0" OD x 1/8"

BOLT PLATE CONNECTION 5/8"

THREE CONNECTION OPTIONS



RIGGING and DESIGN
Xtreme Structures and Fabrication (XSF) • 12" x 12" Bolted Utility Truss



2'x12" XSF Truss Bolted	Silver	XS1212-024BS
2.5'x12" XSF Truss Bolted	Silver	XS1212-030BS
3'x12" XSF Truss Bolted	Silver	XS1212-036BS
4'x12" XSF Truss Bolted	Silver	XS1212-048BS
5'x12" XSF Truss Bolted	Black	XS1212-060BB
5'x12" XSF Truss Bolted	Silver	XS1212-060BS
6'x12" XSF Truss Bolted	Black	XS1212-072BB
8'x12" XSF Truss Bolted	Black	XS1212-096BB
8'x12" XSF Truss Bolted	Silver	XS1212-096BS
10'x12" XSF Truss Bolted	Black	XS1212-120BB

		Uniformly Distributed		Center Point Loads		Third Point Loads		Quarter Point Loads		TOTAL UNIT WEIGHT											
Span	UDL	Total Load	Max. Defl.	Load	Max. Defl.	Load	Max. Defl.	Load	Max. Defl.	LBS	KG										
XSF 12" Bolted Utility Truss																					
ft	m	lbs/f	kg/m	lbs	kgs	in	mm	lbs	kgs	in	mm	LBS	KG								
5	1.52	2033	3165	10165	4811	0.04	1	6960	3157	0.04	1	4176	1894	0.04	1	3093	1403	0.04	1		
10	3.05	553	823	5530	2510	0.17	4	2766	1255	0.13	3	2075	941	0.17	4	1383	628	0.16	4		
15	4.57	277	412	4155	1885	0.43	11	1935	878	0.32	8	1354	614	0.38	10	934	424	0.37	9		
20	6.1	134	199	2680	1216	0.66	17	1342	609	0.54	14	1007	457	0.68	17	671	305	0.63	16		
25	7.62	88	131	2200	998	1.11	28	1066	484	0.88	22	767	348	1.06	27	522	237	1.01	26		
30	9.14	56	83	1680	762	1.48	38	850	386	1.22	31	637	289	1.53	39	425	193	1.43	36		
35	10.67	40	60	1400	635	2.12	54	686	311	1.74	44	500	227	2.07	53	338	154	1.97	50		
40	12.19	29	43	1160	526	2.62	67	582	264	2.19	56	434	197	2.67	68	291	132	2.52	64		

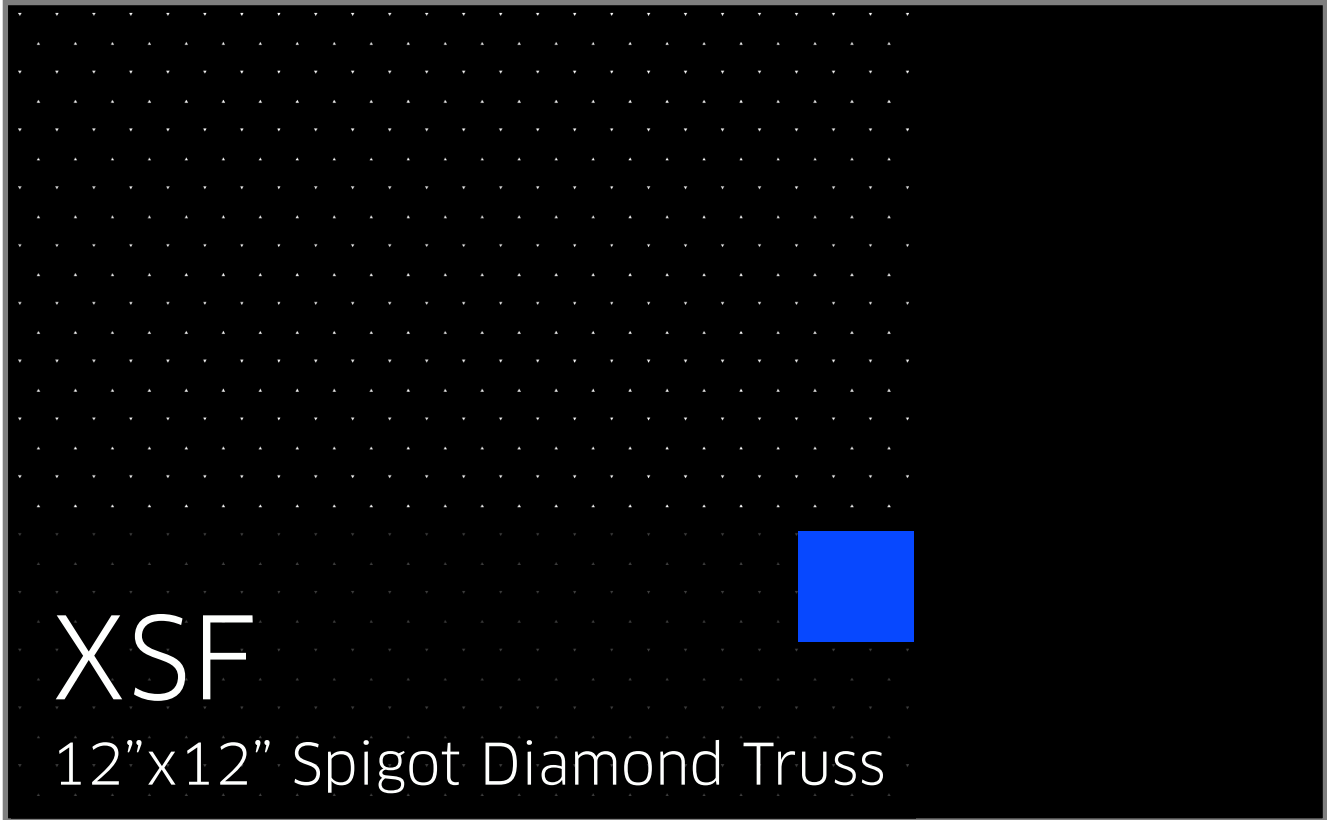
PRODUCT HIGHLIGHTS

Contact **Tony Galuppi**
for available sizes
tgaluppi@ver.com

- Main Chords are 2.0" OD x 1/8" wall aluminum
- Diagonals are 1.0" OD x 1/8" wall aluminum
- Bolt plate connection for use with 5/8" bolts

VER is your global resource for
Production Equipment, Support
and Creative Solutions

USA | Canada | Europe
USA and Canada: **800.794.1407**
Europe: **+44 (0) 20 8445 0267**



- Main Chords are 2.0" OD x 3/16" wall aluminum
- Diagonals are 1.0" OD x 3/16" wall aluminum
- Easy 3/4" clevis pin and R-clip installation for fast setup
- Designed to be hung on the diamond
- Can be used for tower setups with our custom anchor block
- Perfect for hanging massive / heavy LED walls

HEAVY DUTY DIAMOND TRUSS

DIAGONALS 1.0" OD x 3/16"

MAIN CHORDS 2.0" OD x 3/16"

PERFECT FOR LED WALLS

12" SPIGOTED TRUSS also available contact Tony Galuppi for available sizes tgaluppi@ver.com	10'x12" XSF Diamond Truss Spigoted	Black	XS12VARIABLE-120SPB
	5'x12" XSF Diamond Truss Spigoted	Black	XS12VARIABLE-060SPB
	8'x12' XSF Diamond Truss Spigoted	Black	XS12VARIABLE-096SPB
	10'x12' XSF Diamond Truss Spigoted	Black	XS12VARIABLE-CB2SPB



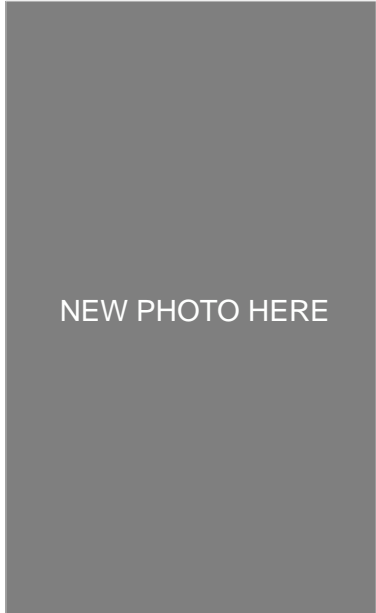
Span	Uniformly Distributed				Center Point Loads				Third Point Loads				Quarter Point Loads				TOTAL UNIT WEIGHT				
	UDL	Total Load	Max. Defl.		Load	Max. Defl.			Load	Max. Defl.			Load	Max. Defl.			LBS	KG			
XSF 12" Spigoted Diamond Truss																					
ft	m	lbs/f	kg/m	lbs	kgs	in	mm	lbs	kgs	in	mm	lbs	kgs	in	mm	lbs	kgs	in	mm	LBS	KG
10	3.05	1011	1508	10110	4586	0.21	5	6330	2871	0.21	5	4748	2154	0.21	5	3165	1435	0.21	5		
20	6.1	375	559	6180	2803	1.04	26	3098	1405	1.04	26	2323	1054	1.04	26	1549	703	1.04	26		
30	9.14	41	61	3330	1510	2	51	1990	903	2	51	1225	556	2	51	878	398	2	51		
40	10.67	21	31	821	372	2.63	67	821	372	2.63	67	613	278	2.63	67	411	186	2.63	67		
50	12.19	11	16	288	131	2.63	67	288	131	2.63	67	216	98	2.63	67	144	65	2.63	67		
XSF 12" Spigoted Truss																					
ft	m	lbs/f	kg/m	lbs	kgs	in	mm	lbs	kgs	in	mm	lbs	kgs	in	mm	lbs	kgs	in	mm	LBS	KG
10	3.05	1011	1508	10110	4596	0.21	5	6330	2871	0.21	5	4748	2153	0.27	7	3165	1435	0.25	6		
20	6.1	309	461	6180	2803	1.04	26	3098	1405	0.84	21	2323	1053	1.07	27	1549	702	1	25		
30	9.14	111	166	3330	1510	2	51	1990	902	1.91	49	1225	555	2	51	878	398	2	51		
40	12.19	41	61	1640	744	2.63	67	821	372	2.2	56	613	278	2.66	68	411	186	2.52	64		
50	15.24	11	16	550	249	2.63	67	288	130	2.33	59	216	97	2.66	68	144	65	2.56	65		

XSF

12"x12" Spigot Diamond Truss



- Main Chords are 2.0" OD x 3/16" wall aluminum
- Diagonals are 1.0" OD x 3/16" wall aluminum
- Easy 3/4" clevis pin and R-clip installation for fast setup
- Designed to be hung on the diamond
- Can be used for tower setups with our custom anchor block
- Perfect for hanging massive / heavy LED walls



12" SPIGOTED TRUSS
also available

contact **Tony Galuppi** for available sizes
tgaluppi@ver.com



XSF

20.5" Bolted Medium Duty

- Main Chords are 2.0" OD x 1/8" wall aluminum
- Diagonals are 1.0" OD x 1/8" wall aluminum
- Bolt plate connection for use with 5/8" bolts

4'x20.5" XSF Truss Bolted	Black	XS2020-048BB
4'x20.5" XSF Truss Bolted	Silver	XS2020-048BS
5'x20.5" XSF Truss Bolted	Black	XS2020-060BB
5'x20.5" XSF Truss Bolted	Silver	XS2020-060BS
8'x20.5" XSF Truss Bolted	Black	XS2020-096BB
8'x20.5" XSF Truss Bolted	Silver	XS2020-096BS
10'x20.5" XSF Truss Bolted	Black	XS2020-120BB
10'x20.5" XSF Truss Bolted	Silver	XS2020-120BS

XFS 'EXTREME' QUALITY

MEDIUM DUTY

BOLT PLATE CONNECTION 5/8"

contact **Tony Galuppi**
for available sizes
tgaluppi@ver.com

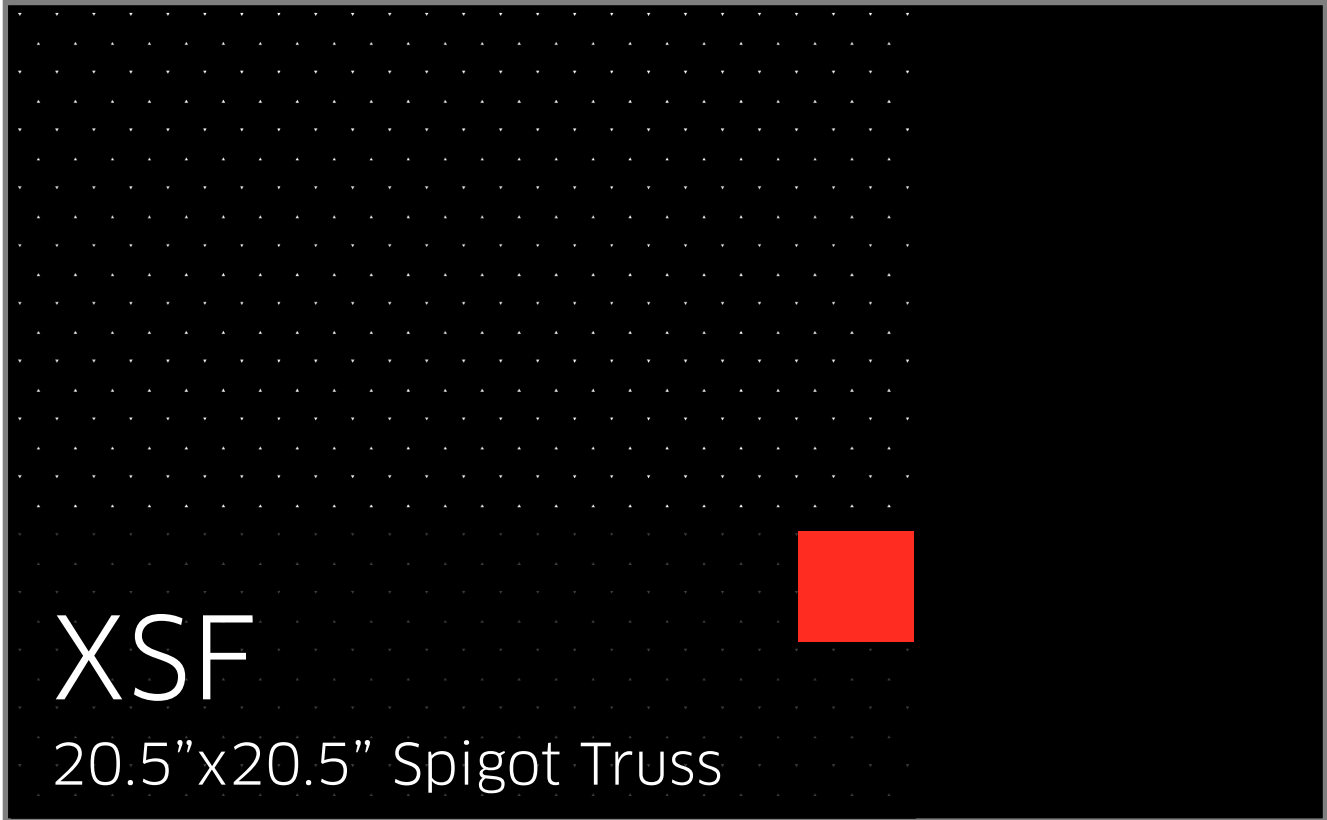


Span	Uniformly Distributed				Center Point Loads				Third Point Loads				Quarter Point Loads				TOTAL UNIT WEIGHT				
	UDL	Total Load	Max. Defl.		Load	Max. Defl.			Load	Max. Defl.			Load	Max. Defl.			LBS	KG			
XSF 20.5" Bolted Truss																					
ft	m	lbs/f	kg/m	lbs	kgs	in	mm	lbs	kgs	in	mm	lbs	kgs	in	mm	lbs	kgs	in	mm	LBS	KG
5	1.52	1957	2920	9785	4438	0.01	0	9787	4439	0.02	1	4894	2219	0.01	0	3262	1479	0.01	0		
10	3.05	976	1456	9760	4427	0.09	2	5863	2659	0.08	2	4398	1994	0.11	3	2932	1329	0.1	3		
15	4.57	593	885	8895	4035	0.27	7	4135	1875	0.2	5	2895	1313	0.24	6	1996	905	0.23	6		
20	6.1	287	428	5740	2604	0.41	10	2876	1304	0.33	8	2157	978	0.42	11	1438	652	0.4	10		
25	7.62	194	289	4850	2200	0.7	18	2330	1056	0.55	14	1677	760	0.66	17	1141	517	0.63	16		
30	9.14	123	184	3690	1674	0.93	24	1855	841	0.76	19	1391	630	0.95	24	927	420	0.89	23		
35	10.67	91	136	3185	1445	1.33	34	1557	706	1.07	27	1134	514	1.3	33	767	347	1.23	31		
40	12.19	66	98	2640	1198	1.65	42	1326	601	1.36	35	994	450	1.69	43	663	300	1.59	40		
45	13.72	53	79	2385	1082	2.17	55	1176	533	1.77	45	862	391	2.14	54	581	263	2.03	52		
50	15.24	39	58	1950	885	2.55	65	993	450	2.16	55	745	337	2.64	67	497	225	2.49	63		

XSF
20.5" Bolted Medium Duty



contact **Tony Galuppi**
for available sizes
tgaluppi@ver.com



All VER Rigging products and custom solutions are designed and manufactured with the needs of the end customer in mind. All safety issues are identified and addressed for all levels of operation, including handling, transportation and usage.

MAIN CHORDS 2.0" OD x 3/16"

DIAGONALS 1.0" OD x 1/8"

FORK-ENDED CONNECTION

VER Rigging maximizes the safety elements of products and how they are used in designs from the very beginning of the design process. contact Tony Galuppi for available sizes tgaluppi@ver.com	8'x20.5" XFS Truss Spigoted	Black	XS2020-096SPB
	8'x20.5" XFS Tower Truss Spigoted	Black	XS2020-096TSPB
	5'x20.5" XSF Truss Spigoted	Black	XS2020-060SPB
	4'x20.5" XSF Truss Spigoted	Black	XS2020-048SPB
	3'x20.5" XSF Truss Spigoted	Black	XS2020-036SPB
	10'x20.5" XSF Truss Spigoted	Black	XS2020-120SPB



Span	Uniformly Distributed			Center Point Loads		Third Point Loads		Quarter Point Loads		TOTAL UNIT WEIGHT											
	UDL	Total Load	Max. Defl.	Load	Max. Defl.	Load	Max. Defl.	Load	Max. Defl.	LBS	KG										
XSF 20.5" Spigoted Truss																					
ft	m	lbs/f	kg/m	lbs	kgs	in	mm	lbs	kgs	in	mm	lbs	kgs	in	mm	LBS	KG				
10	3.05	920	1373	9200	4173	0.06	2	9200	4173	0.09	2	4600	2087	0.08	2	3067	1391	0.07	2		
20	6.1	454	677	9080	4119	0.45	11	5968	2707	0.47	12	4476	2030	0.6	15	2984	1354	0.56	14		
30	9.14	259	386	7770	3524	1.32	34	3893	1766	1.07	27	2920	1324	1.35	34	1946	883	1.26	32		
40	12.19	141	210	5640	2558	2.36	60	2830	1284	1.92	49	2122	963	2.41	61	1415	642	2.25	57		
50	15.24	77	115	3850	1746	3.33	85	2172	985	3.02	77	1424	646	3.33	85	1021	463	3.33	85		

XSF

20.5"x20.5" Spigot Truss



VER Rigging maximizes the safety elements of products and how they are used in designs from the very beginning of the design process.



contact **Tony Galuppi**
 for available sizes
 tgaluppi@ver.com



XSF

24"x30" Spigot Pre-Rigged

- Main Chords are 2.0" OD x 3/16" wall aluminum
- Diagonals are 1.0" OD x 1/8" wall aluminum
- Fork-ended connection for use with 3/4" clevis pins
- Lower Chords have attachments designed inn for chain baskets for shipping motors pre-hung on the truss for quick load-in application
- Consistent placement of the lower members for uniform lighting spacing
- Increased load capacity for those BIG SHOWS!
- Factory installed wheels make it a roll-and-go situation in every application

MAIN CHORDS 2.0" OD x 3/16"

DIAGONALS 1.0" OD x 1/8"

FORK-ENDED CONNECTION

INCREASED LOAD CAPACITY

FACTORY INSTALLED WHEELS

contact **Tony Galuppi**
for available sizes
tgaluppi@ver.com



Span	Uniformly Distributed			Center Point Loads		Third Point Loads		Quarter Point Loads		TOTAL UNIT WEIGHT							
	UDL	Total Load	Max. Defl.	Load	Max. Defl.	Load	Max. Defl.	Load	Max. Defl.	LBS	KG						
24"x30" Spigoted Pre-Rigged Truss																	
ft	m	lbs/f	kg/m	lbs	kgs	in	mm	lbs	kgs	in	mm	lbs	kgs	in	mm	LBS	KG
10	3.05	1956	2918	19560	8872	0.05	1	17783	8066	0.08	2	9780	4436	0.07	2	6520	2957
20	6.1	879	1312	17580	7974	0.38	10	8791	3988	0.32	8	6594	2991	0.39	10	4396	1994
30	9.14	383	571	11490	5212	0.85	22	5750	2608	0.69	18	4312	1956	0.87	22	2875	1304
40	12.19	209	312	8360	3792	1.51	38	4165	1889	1.23	31	3147	1427	1.55	39	2098	952
50	15.24	129	192	6450	2926	2.36	60	3236	1468	1.94	49	2427	1101	2.42	61	1618	734
60	18.29	80	119	4800	2177	3.21	82	2409	1093	2.67	68	1807	820	3.29	84	1205	547

XSF
 24"x30" Spigot Pre-Rigged



	Silver	
	Silver	
	Silver	
	Silver	
	Black	
	Silver	
	Black	
	Black	
	Silver	
	Black	



contact **Tony Galuppi**
 for available sizes
 tgaluppi@ver.com



SPECIALTY

XSF Trussing Components

Our Lorem ipsum dolor sit amet, consectetur adipiscing elit, sed do eiusmod tempor incididunt ut labore et dolore magna aliqua. Ut enim ad minim veniam, quis nostrud exercitation ullamco laboris nisi ut aliquip ex ea commodo consequat. Duis aute irure dolor in reprehenderit in voluptate velit esse cillum dolore eu fugiat nulla pariatur.

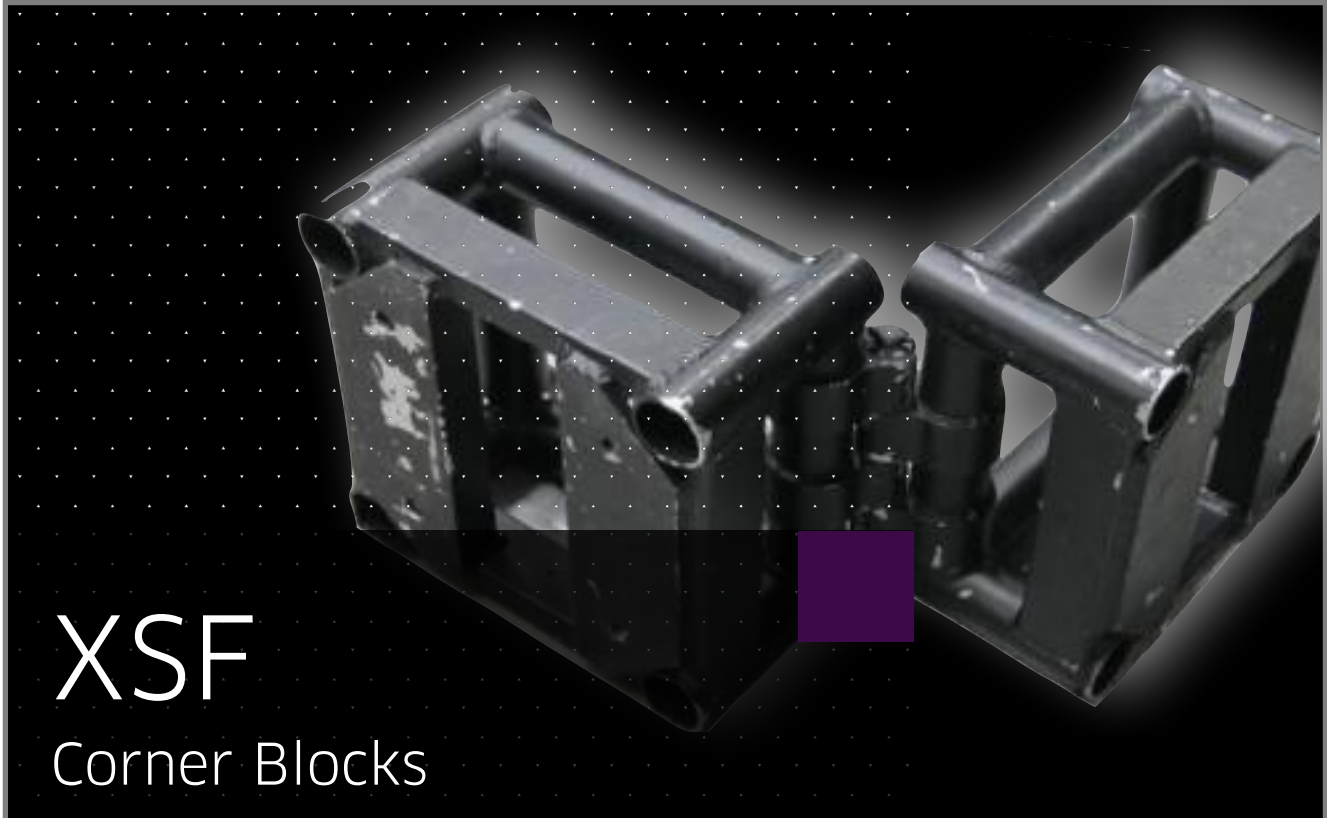
CORNER BLOCKS

CIRCLES

BATTONS

LADDERS

contact **Tony Galuppi**
for all specialty truss details
tgaluppi@ver.com



XSF Hinge Block 12" Bolted		XS1212-HBBS
XSF Hinge Block 12" Bolted	Black	XS1212-HBBB
CB 6w 12" XSF Truss Bolted	Black	XS1212-CB6BB
CB 6w 12" XSF Truss Bolted	Silver	XS1212-CB6BS
CB 5w 20.5" XSF Truss Bolted	Black	XS2020-CB5BB
CB 5w 20.5" XSF Truss Bolted	Silver	XS2020-CB5BS
CB 6w 20.5" XSF Truss Bolted	Black	XS2020-CB6BB
XSF Hinge Block 20.5" Bolted	Black	XS2020-HBBB
30"x24" XSF 2way Gate	Black	XS3024-2WGATESPB
30"x24" XSF 3way Gate	Black	XS3024-3WGATESPB

LOAD RATED HINGE PLATES

**BOLTED OR PINNED
 CONNECTION AVAILABLE**

contact
Tony Galuppi
 For available sizes
 tgaluppi@ver.com



Lorem ipsum dolor sit amet, consectetur adipiscing elit, sed do eiusmod tempor incididunt ut labore et dolore magna aliqua. Ut enim ad minim veniam, quis nostrud exercitation ullamco laboris nisi ut aliquip ex ea commodo consequat. Duis aute irure dolor in reprehenderit in voluptate velit esse cillum dolore eu fugiat nulla pariatur.

WORDS

WORDS

WORDS

contact Tony Galuppi for available sizes tgalluppi@ver.com		Black	
		Black	
		Black	
		Black	



Lorem ipsum dolor sit amet, consectetur adipiscing elit, sed do eiusmod tempor incididunt ut labore et dolore magna aliqua. Ut enim ad minim veniam, quis nostrud exercitation ullamco laboris nisi ut aliquip ex ea commodo consequat. Duis aute irure dolor in reprehenderit in voluptate velit esse cillum dolore eu fugiat nulla pariatur.

WORDS

WORDS

WORDS

contact Tony Galuppi for available sizes tgaluppi@ver.com		Black	
		Black	
		Black	
		Black	



Lorem ipsum dolor sit amet, consectetur adipiscing elit, sed do eiusmod tempor incididunt ut labore et dolore magna aliqua. Ut enim ad minim veniam, quis nostrud exercitation ullamco laboris nisi ut aliquip ex ea commodo consequat. Duis aute irure dolor in reprehenderit in voluptate velit esse cillum dolore eu fugiat nulla pariatur.

WORDS

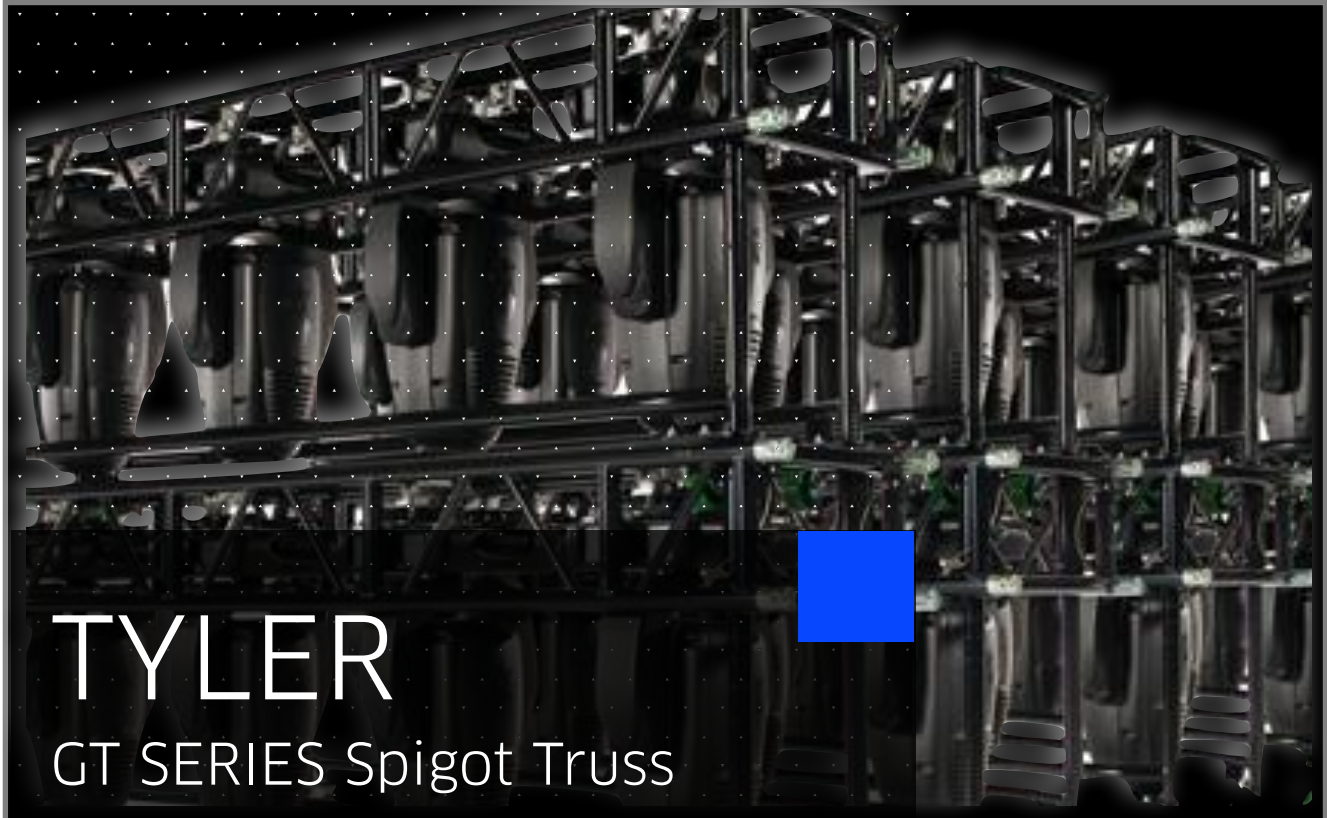
WORDS

WORDS

contact Tony Galuppi for available sizes tgalluppi@ver.com		Black	
		Black	
		Black	
		Black	



RIGGING and DESIGN
Tyler GT Spigot Truss



Now and then, a new idea comes along that revolutionizes an entire industry. Tyler Truss Systems did just that when they launched their line of GT lighting truss. The Rigging / Staging industry demanded it and so, we've added it to our inventory to meet the needs of the client.

MAIN CHORDS 2.0" OD x 1/8"

DIAGONALS 1.0" OD x 1/8"

BOLT PLATE CONNECTION 5/8"

THREE CONNECTION OPTIONS

contact
Tony Galuppi
for available sizes
tgaluppi@ver.com

Span		Uniformly Distributed				Center Point Loads				Third Point Loads				Quarter Point Loads				TOTAL UNIT WEIGHT			
UDL		Total Load	Max. Defl.		Load	Max. Defl.		Load	Max. Defl.		Load	Max. Defl.		Load	Max. Defl.		LBS	KG			
5' Tyler GT Truss Spigot v2																					
ft	m	lbs/f	kg/m	lbs	kgs	in	mm	lbs	kgs	in	mm	lbs	kgs	in	mm	lbs	kgs	in	mm	lbs	kgs
5	1.52	1185	1768	5925	2588	0.125	3	1870	848	0.06	2	2000	907	0.12	3	1400	635	0.12	3	104	47
10	3.05	1085	1617	10850	4921	0.301	8	4800	2177	0.265	7	2550	1157	0.23	6	1830	830	0.2	5	208	94
15	4.57	685	1021	10275	4661	0.659	17	1800	816	0.225	6	4050	1837	0.697	18	1720	780	0.59	15	312	142
20	6.1	494	736	9880	4481	1.332	34	4030	1828	0.951	24	2545	1154	0.96	24	2350	1066	1.24	31	416	189
25	7.62	264	393	6600	2994	1.666	42	1730	785	0.77	20	2395	1086	1.66	42	1575	714	1.56	40	520	236
30	9.14	154	229	4620	2096	2	51	2800	1270	2.003	51	1700	771	2	51	1205	547	2	51	624	283
8' Tyler GT Truss Spigot v2																					
ft	m	lbs/f	kg/m	lbs	kgs	in	mm	lbs	kgs	in	mm	lbs	kgs	in	mm	lbs	kgs	in	mm	lbs	kgs
8	2.43	665	992	5320	4438	0.187	5	2065	937	0.14	4	1690	767	0.17	4	1335	606	0.18	5	128	58
16	4.87	555	828	8880	4427	0.677	17	4345	1971	0.6	15	1490	676	0.33	8	2070	939	0.63	16	256	116
24	7.31	295	440	7080	4035	1.584	40	2085	946	0.86	22	2550	1157	1.55	39	1440	653	1.24	31	384	174
32	9.75	125	187	4000	2504	2.03	53	2490	1129	2.13	54	1335	606	1.95	50	1070	485	2.13	54	512	232
40	12.19	63	94	2520	2200	2.65	68	1520	689	2.66	68	935	424	2.66	68	635	288	2.66	68	640	290
48	14.63	33	49	1584	1574	3.18	81	980	445	3.19	81	580	263	3.18	81	425	193	3.24	82	768	348
10' Tyler GT Truss Spigot v2																					
ft	m	lbs/f	kg/m	lbs	kgs	in	mm	lbs	kgs	in	mm	lbs	kgs	in	mm	lbs	kgs	in	mm	lbs	kgs
10	3.05	690	1030	6900	3130	0.3	8	1630	739	0.12	3	2125	964	0.26	7	1745	792	0.29	7	144	65
20	6.1	400	597	8000	3529	1.18	30	3740	1696	0.97	25	2235	1014	0.9	23	1455	660	0.84	21	288	131
30	9.14	150	224	4500	2041	2	51	1445	655	1.12	28	1665	755	2	51	1175	533	2	51	432	196
40	12.19	62.5	93	2500	1082	2.63	55	1520	533	2.7	45	920	391	2.68	54	650	263	2.66	52	576	261
50	15.24	28	42	1400	635	3.3	84	880	399	3.34	85	520	236	3.32	84	375	170	3.34	85	720	327
60	18.29	13	19	780	354	4	102	485	220	4	102	285	129	4	102	205	93	4	102	864	392

- Reduced load-in time and fuel consumption
- Eliminates fixture cases by prepping the instruments on the truss and leaving the cases behind



VER RIGGING AND DESIGN • TYLER TRUSS PRODUCT LINE		
4' Tyler GT Truss Spigot 90 Degree v2	Black	4TYLERB90DV2
4' Tyler GT Truss Adjustable Leg v2	Black	4TYLERLBV2
4' Tyler GT Truss Spigot 90 Degree	Black	4TYLERTSBR90

contact
Tony Galuppi
for available sizes
tgaluppi@ver.com



4' Tyler GT Truss Adjustable Leg	Black	4TYLERTLB
5' Tyler GT Truss Spigot v2	Black	5TYLERBV2
5' Tyler GT Truss Adjustable Leg v2	Black	5TYLERLBV2
5' Tyler GT Truss v2 (Removable/Rotatable Spigots)	Black	5TYLERTBRSV2
5' Tyler GT Truss Adjustable Leg v2	Black	5TYLERTLBV2
5' Tyler GT Truss Spigot	Black	5TYLERTSB
5' Tyler GT Truss Adjustable Leg	Black	5TYLERTLB
8' Tyler GT Truss v2 (Removable/ Rotatable Spigots)	Black	8TYLERTBRSV2
8' Tyler GT Truss Adjustable Leg v2	Black	8TYLERTLBV2
8' Tyler GT Truss v2	Black	8TYLERTSBV2

TYLER

GT Series Spigot Truss

8' Tyler GT Truss Spigot 90 Degree v2	Black	8TYLERB90DV2
8' Tyler GT Truss Spigot Rotate 90 Degree	Black	8TYLERTSBR90
8' Tyler GT Truss Spigot	Black	8TYLERTSBB
8' Tyler GT Truss Adjustable Leg	Black	8TYLERTLB
10' Tyler GT Truss Spigot	Black	10TYLERTSBL
10' Tyler GT Truss v2	Black	10TYLERTSBV2
10' Tyler GT Truss Adjustable Leg v2	Black	10TYLERTLBV2
10' Tyler GT Truss v2 (Removable / Rotatable Spigots)	Black	10TYLERTBRSV2
10' Tyler GT Truss (Removable / Rotatable Spigots)	Black	10TYLERTSBRS
10' Tyler GT Truss Spigot	Black	10TYLERTSB
10' Tyler GT Truss Adjustable Leg	Black	10TYLERTLB
10' Tyler GT Truss Spigot Rotate 90 Degree	Black	10TYLERTSBR90
10' Tyler GT Truss	Black	10TYLERT



contact
Tony Galuppi
for available sizes
tgaluppi@ver.com



Our Lorem ipsum dolor sit amet, consectetur adipiscing elit, sed do eiusmod tempor incididunt ut labore et dolore magna aliqua. Ut enim ad minim veniam, quis nostrud exercitation ullamco laboris nisi ut aliquip ex ea commodo consequat. Duis aute irure dolor in reprehenderit in voluptate velit esse cillum dolore eu fugiat nulla pariatur.

XSF 36" UNI-BASE PLATE

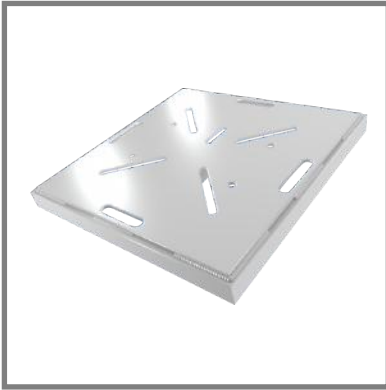
GRAPPLES 12" • 20" • 24"

RIG POINTS

HINGE BLOCKS

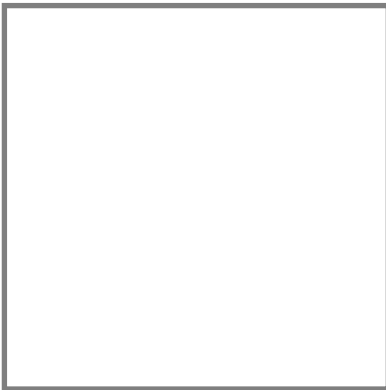
ARTICULATING BLOCKS

AND ONE MORE?



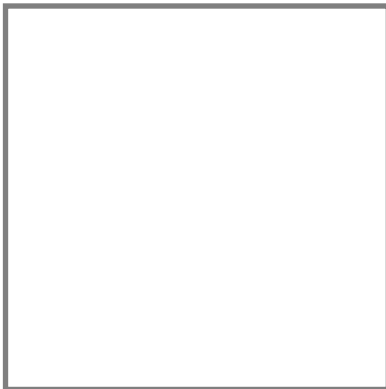
XSF 36" Uni-Base Plate

available with three connection options: Fork Ended, Plated and Aluminum Fork Ended in a large selection of straight and circular trussing. Our book-end and center-pivot hinges all include heavy duty stainless steel shafts and high



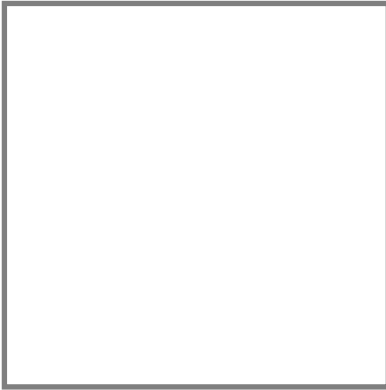
Grapples 12" • 20" • 24"

high quality truss is available with three connection options: Fork Ended, Plated and Aluminum Fork Ended in a large selection of straight and circular trussing. Our book-end and center-pivot hinges all include heavy duty stainless steel shafts and high



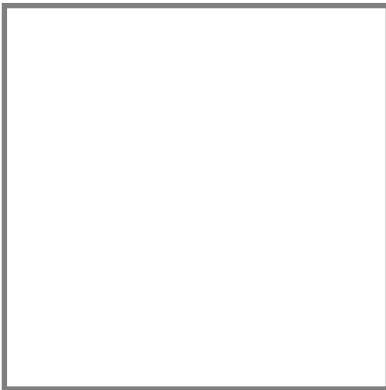
Rig Points

Our high quality truss is available with three connection options: Fork Ended, Plated and Aluminum Fork Ended in a large selection of straight and circular trussing. Our book-end and center-pivot hinges all include heavy duty stainless steel shafts and high



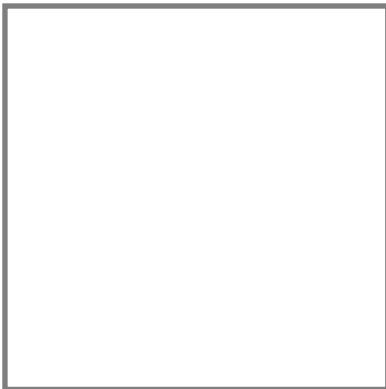
Hinge Blocks

available with three connection options: Fork Ended, Plated and Aluminum Fork Ended in a large selection of straight and circular trussing. Our book-end and center-pivot hinges all include heavy duty stainless steel shafts and high



Articulating Blocks

high quality truss is available with three connection options: Fork Ended, Plated and Aluminum Fork Ended in a large selection of straight and circular trussing. Our book-end and center-pivot hinges all include heavy duty stainless steel shafts and high



???

Our high quality truss is available with three connection options: Fork Ended, Plated and Aluminum Fork Ended in a large selection of straight and circular trussing. Our book-end and center-pivot hinges all include heavy duty stainless steel shafts and high

CHAIN HOISTS





CM Lodestar

Electric Chain Motor

Need a Lift? VER Rigging has invested in the new, latest and greatest electric hoist from CM Entertainment Technology. Legendary in performance, professional riggers around the world have come to rely on the CM Lodestar® for the most demanding and challenging applications. Now, this iconic hoist is available as an economical 2-ton single-reeved unit that is ideal for an untold variety of lifting applications. And, because it's a single reeved unit, overall weight is decreased making it safer and easier to transport and rig compared to a double-reeved unit.

Contact Tony Galuppi for details tgaluppi@ver.com

CAPACITIES: 1/8 TO 2 TONS

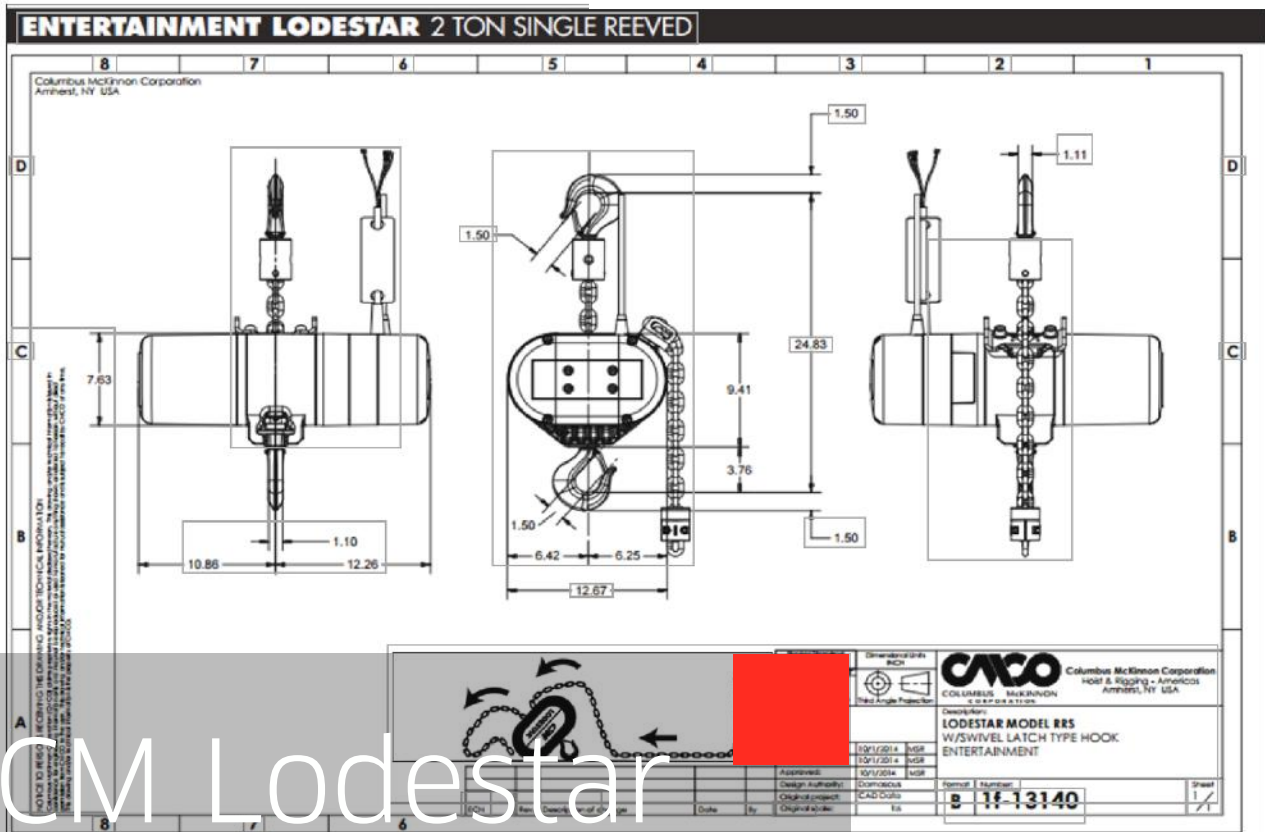
SPEED: 8-16-VARIABLE FPM

VOLTAGES: 1 AND 3-PHASE

STANDARD LIFT: 16 FEET/MIN

FIVE POCKET LIFT WHEEL

REDESIGNED CONTROL PANEL



CM Lodestar

Electric Chain Motor

